

# Annual Report 2023



Though we experienced a decrease in ticket volume in 2023, it was a very productive year for implementing improvements to help ensure underground facility operators are receiving relevant locate notices for excavation taking place around their underground facilities. We transitioned from Update tickets to Re-Mark or Extend tickets, enabling the excavator to “extend” their ticket if marks were still good. We’re now seeing 6% of the tickets coming through as “extend” which saves the facility operator time and money and enables them to put their resources where the actual work is needing to be done.

There was legislation passed in 2023 that establishes a Design-Survey notice and outlines requirements for Operators to respond to these notices when they are received with either maps or marks on the ground. Since implementing this new notification type, we have noticed the need to educate those submitting these tickets to ensure they include sufficient information for Operators to respond.

The Damage Prevention Coordinating Council (DPCC) has continued meeting and working on potential legislation for 2024. This council is made up of stakeholders from across our industry including contractors, professional excavators, line locators, underground facility operators, relevant industry associations, and of course, OKIE811. The current focus is on determining the need for a Pre-Excavation Planning ticket and a Large Project ticket.

We are excited to continue our focus on quality services, process improvements, and on helping Oklahoma be the safest place to dig. I thank our industry partners for working with us to make this possible.

Susan Bohl, Executive Director  
OKIE811

# Providing Quality Underground Damage Prevention Services

## 2023 FINANCIALS (unaudited)

Cash / Equivalents	7,350,804
Property & Equipment	2,751,943
Investment / Reserve	2,975,903
<u>Total Assets</u>	<b>13,078,650</b>

Current Liabilities	4,323,789
Net Assets	8,754,861
<u>Total Liab &amp; Net Assets</u>	<b>13,078,650</b>

## REVENUE

Membership Fees	6,126,474
Service Income	83,494
Self-Funded Programs	68,458
Investments/Interest	541,063
<u>Total Revenue</u>	<b>6,819,489</b>

## EXPENSES

Program Expenses	4,945,815
Admin & General Exp	1,141,251
<u>Total Operating Exp</u>	<b>6,087,066</b>

**NET INC / NET ASSET      \$ 732,423**

## OKIE811 Board of Directors for 2023

Chris Breeding – President	COX Comm.
Richard Forney – Treasurer	AEP-PSO
Paige Ross – Secretary	OneGas/ONG
Teri Anderson – Director	ONEOK
Greg Clarkson – Director	AT&T
Chad Guthrie – Director	OG&E
Marty Hayes – Director	OEC
Tux Jackson – Director	Plains Pipeline
Bob Porter – Director	Verizon
Tim Young – Director	City of El Reno
Jim Proszek – Advisor	Hall Estill

## OKIE811 Management Team

Susan Bohl	Executive Director
Jerrell Welch	Director of Operations
Angie Niemeyer	Director of Bus & Education
Renelle Freeman	Contact Center Manager
Hailey Manning	QA & Training Manager
Troy Daniels	Applications & GIS Manager

## OKIE811 Board Appointed Operating Committee Members for 2023

Garrett Bernathy, Chair	OG&E	Clint Mobley	OK Electric Co-Op
Jason Beguin	Magellan LP	Craig Parker	AOGC, Silverstar
Austin Crossno	AT&T	Josh Powers	Universal Surveying
Mike Einhorn	OneGas/ONG	Bobby Peters	Pioneer Telephone
Ryan Egan	Lumen Technologies	Russell Reeves	USIC
Cody Fees	Energy Transfers	Brandon Renfro	Gridhawk
Chris Garrison	City of Oklahoma City	Ronnie Sanchez	COX Communications
Alex Holland	ONEOK	Tim Teel	Summit Utilities
Kent Jackson	B&H Boring	Chris Young	Phillips 66

## OKIE811

6908 N. Robinson Ave.

Oklahoma City, OK 73116

Office: (405) 840-9955 or Toll Free (800) 522-6544

Fax: (405) 840-9685

Submit a Locate Requests:  
Click OKIE811.org ~ Dial 811 ~ (405) 840-9957 ~ (800) 522-6543

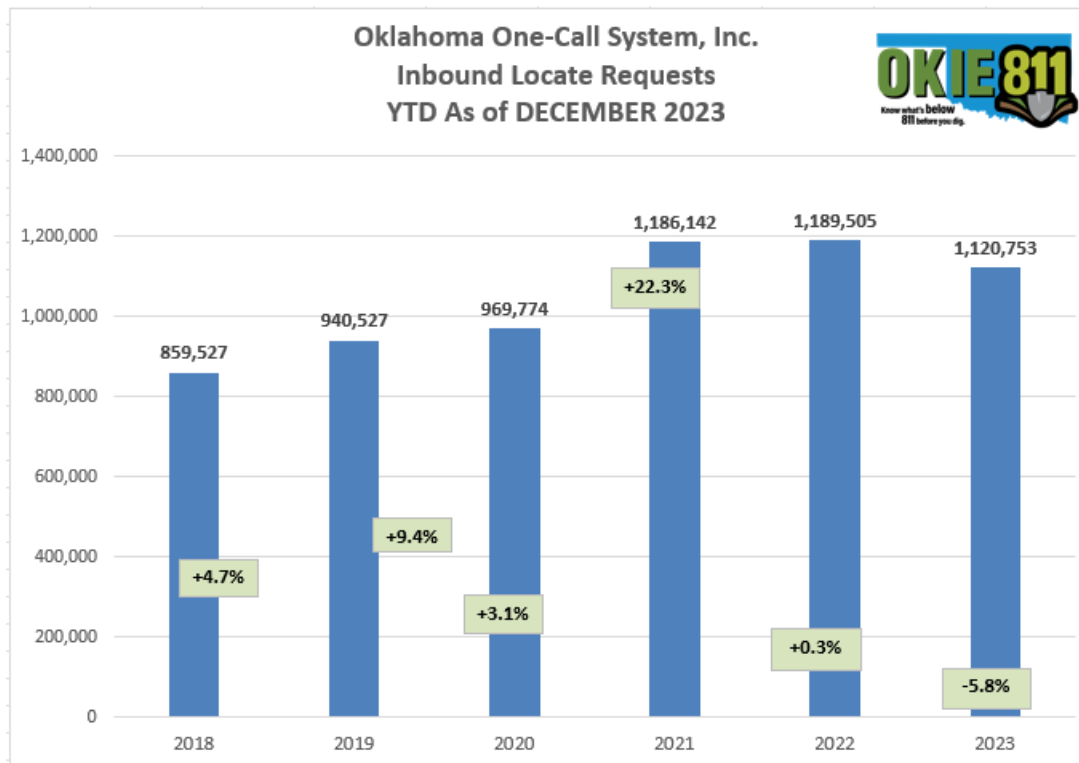


## OKIE811 OPERATIONS

We ended 2023 with a **5.8% decrease in ticket volume**. Even with this decrease, we exceeded 1 million inbound locate requests. We had 3 record months and had (2) 6,000+ ticket days and (47) 5,000+ ticket days. We're continuing to see a decrease in the average number of outbound notices which went from 6.09 in 2021, to 5.68 in 2022, to 5.59 in 2023.

We also successfully completed many key accomplishments in 2023 that have helped advance our services to the industry:

- 7.3% reduction in the number of outbound locate notices going to members.
- 100% voluntary employee retention.
- Crafted a Honey Brown Ale as our third 811 Beer for 811 Marketing and Awareness.
- 1.7% Increase in Automated Tickets – 78.2% of our tickets are now submitted electronically.
- We have \$3.2 million in investments, which is more than a 6-month operating reserve.
- Named a Top Workplace for 2023

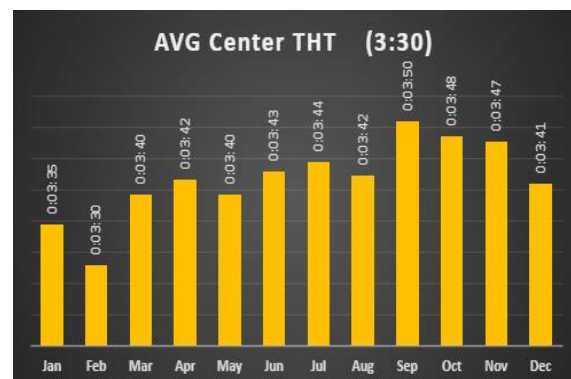
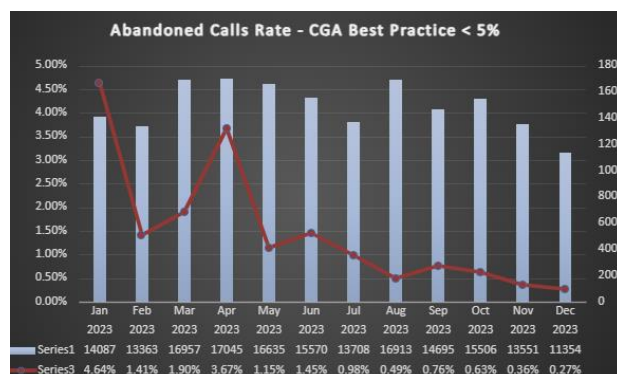
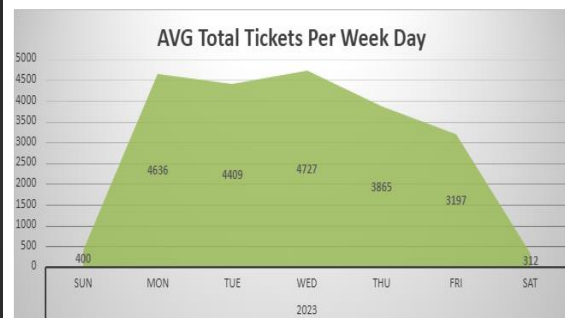


As a part of our mission to provide quality damage prevention services, we continuously focus on the quality of the ticket (i.e., the accuracy of the information, the correct area marked, etc.). Our Quality Assurance team audits a large percentage of the tickets that are submitted by our Damage Prevention Agents as well as tickets directly submitted by Excavators. We are excited to report that 98.99% of the tickets that are processed by OKIE811 are “safe tickets” and 97.3% submitted by direct entry excavators are “safe tickets”.

We achieved 100% of our annual KPI Goals (Key Performance Indicators) in 2023 and are continuously looking for ways to improve our processes and utilize our resources to the fullest.

Quarterly Measurement:	Annual Goal	Q1 Results	Q2 Results	Q3 Results	Q4 Results	FINAL TOT/AVG
Service Uptime/Availability	99.5%	99.93%	99.94%	100.00%	99.98%	99.96%
Sustainable Improvements/Major Accmpls	20	8	9	6	4	27
Employee Retention Rate	90.0%	100.0%	100.0%	100.0%	100.0%	100.0%
Safe Tickets - AGENTS	98.5%	99.4%	98.9%	98.8%	98.9%	98.99%
Safe Tickets - DS Excavators & TX811	97.0%	97.4%	97.1%	97.2%	97.6%	97.3%
Program Delivery (Excavator Education)	6,000	2,105	2,816	2,714	1,180	8,815
Program Impact (Satisfaction w/Educ)	4.25	4.38	4.40	4.51	4.79	4.52
Manage Expense below Budget	6,515,213	1,733,736	1,346,978	1,481,314	1,525,460	6,087,487
Bi-Annual Measurement:						
Excavator Satisfaction	4.40	4.57		4.37		4.47
Member Satisfaction	4.40	4.34		4.51		4.43
Employee Engagement	5.00	5.39		4.66		5.03

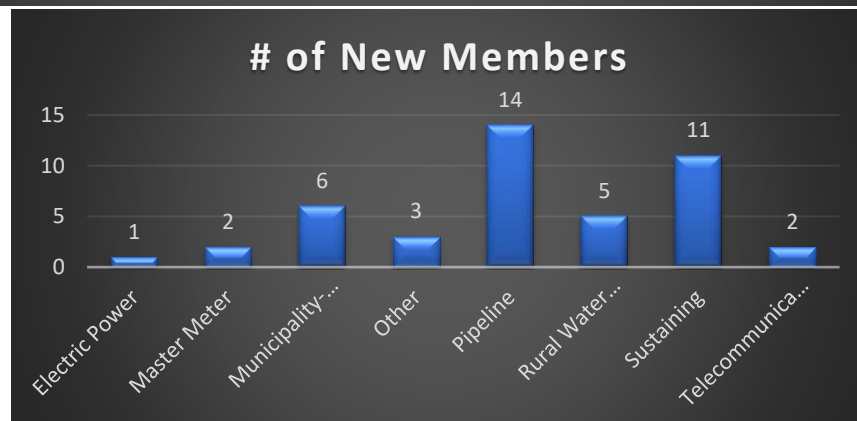
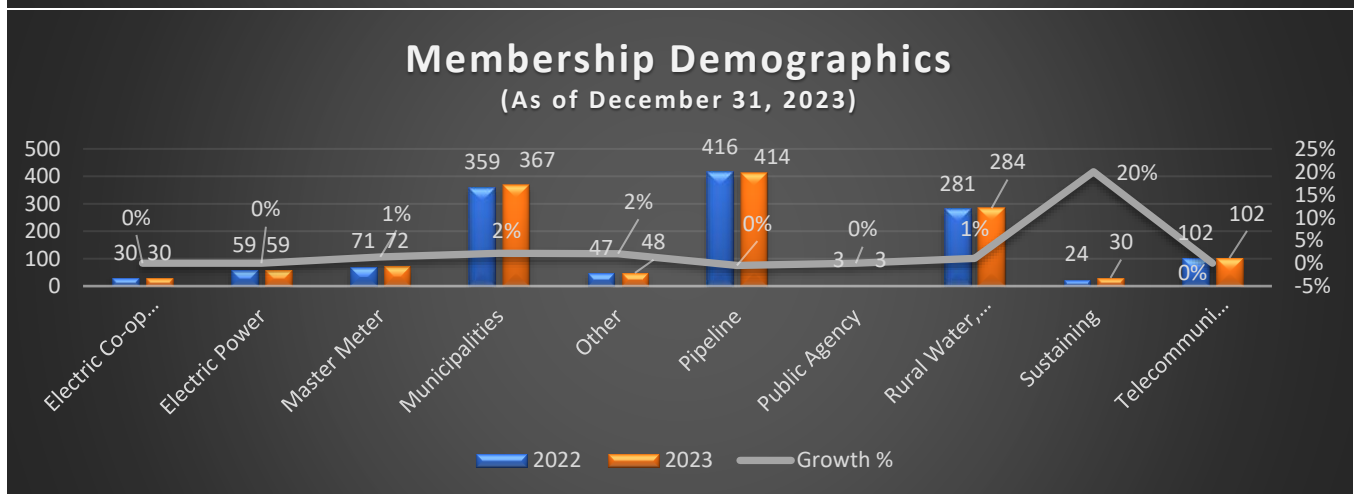
Other Reports of Interest for 2023:





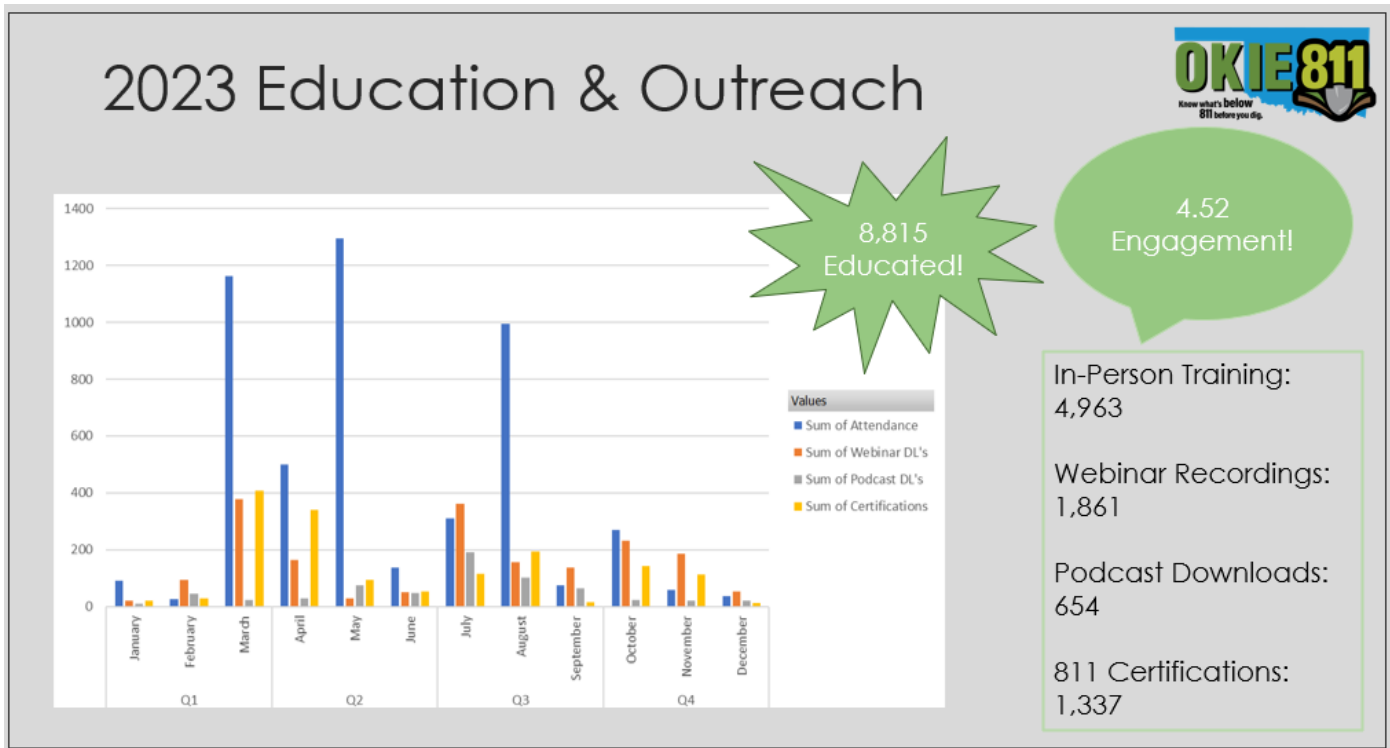
## OKIE811 MEMBERSHIP

In 2023 the membership approved changes to the By-Laws which included a change the voting structure. General members, which are all underground facility operators that are members of OKIE811, now receive one (1) vote which will be weighted based on facility classification and the number of tickets received in the previous billing cycle. For a copy of the by-laws, go go <https://okie811.org/wp-content/uploads/2023/03/OKIE811-ByLaws-Amended-032223.pdf>.



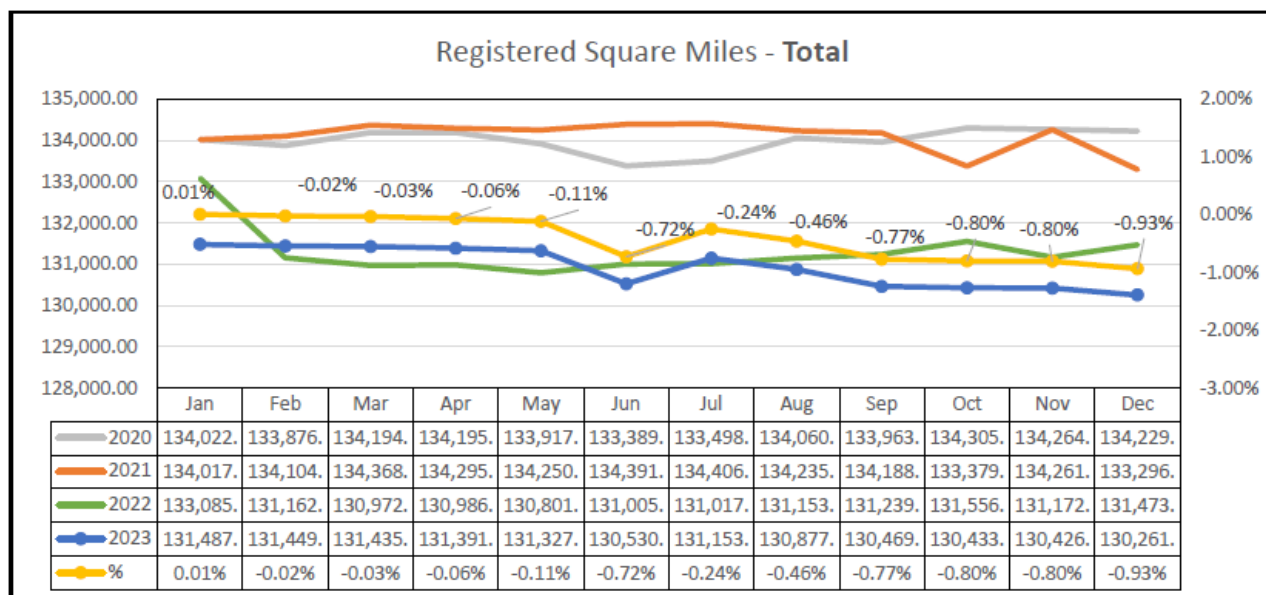
## OKIE811 EDUCATION & OUTREACH

In 2023 we had our annual Safety Expo in-person and had over 225 people in attendance. Our 2024 Expo is happening March 6-7 and for 2025 we will hold the Safety Expo March 26-27. For more information on our Excavator Safety Program, visit <https://okexcavationsafety.com/>



## OKIE811 GIS SERVICES

In 2023, OKIE811 had a total of 130,262 registered square miles of underground facilities. We experienced a -0.93 decrease or 1,211 total square miles since year-end 2022.



# Breakdown of Facility Types

- Telecommunications

■ Rural Water District

■ Municipality

■ Public Agency

■ Other

■ Rural Sewer District
- Pipeline

■ Electric Power

■ Electric Co-op

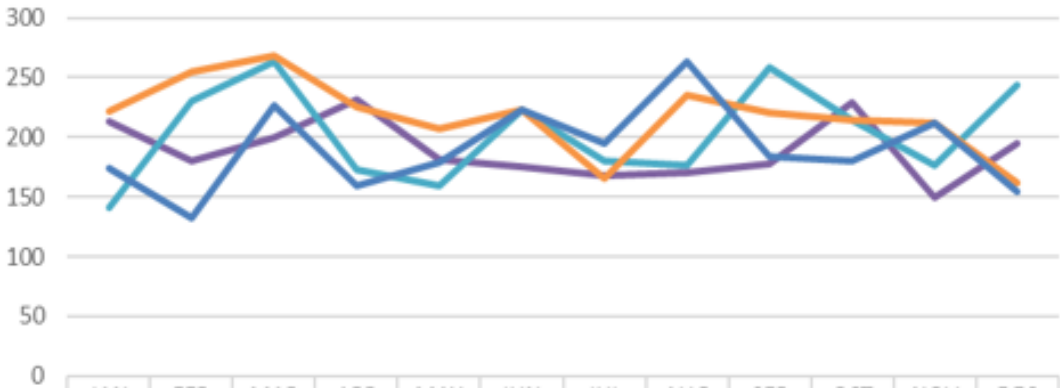
■ Rural Gas District

■ Master Meter

■ Gas Co-op

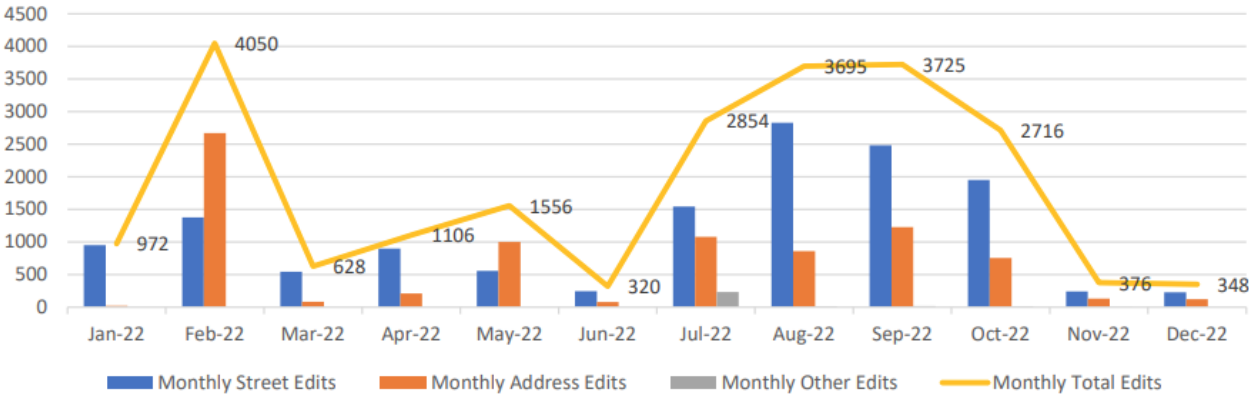


## Service Area Updates



	JAN	FEB	MAR	APR	MAY	JUN	JUL	AUG	SEP	OCT	NOV	DEC
2020	213	180	200	232	181	175	168	170	178	229	150	195
2021	141	230	264	173	159	223	180	177	258	214	177	244
2022	222	255	268	225	207	223	165	235	220	215	212	162
2023	174	132	227	159	179	223	195	263	184	180	212	154

## Monthly Base Map Edits



# OKIE811 MEMBERSHIP FOR 2023

## GENERAL MEMBERS – 1,379

Member Name	Classification	Weighted Vote
Alfalfa Electric Cooperative Inc	Electric Co-op	1.69
Arkansas Valley Electric Cooperative Corp	Electric Co-op	1.69
Canadian Valley Electric Cooperative Inc	Electric Co-op	1.69
Central Rural Electric Cooperative	Electric Co-op	1.69
Choctaw Electric Cooperative Inc	Electric Co-op	1.69
Cimarron Electric Cooperative	Electric Co-op	1.69
CKenergy Electric Cooperative	Electric Co-op	1.69
Cookson Hill's Electric Cooperative	Electric Co-op	1.69
Cotton Electric Cooperative Inc	Electric Co-op	1.69
East Central Oklahoma Electric Co-op Inc	Electric Co-op	1.69
Indian Electric Cooperative Inc	Electric Co-op	1.69
Kay Electric Cooperative Inc	Electric Co-op	1.69
Kiamichi Electric Co-op Inc	Electric Co-op	1.69
Lake Region Electric Cooperative	Electric Co-op	1.69
Northeast OK Electric Co-op Inc	Electric Co-op	1.69
Northfork Electric Co-op Inc	Electric Co-op	1.69
Northwestern Electric Cooperative	Electric Co-op	1.69
Oklahoma Electric Co-op Inc	Electric Co-op	1.69
Ozarks Electric Cooperative	Electric Co-op	1.69
People's Electric Co-op Inc	Electric Co-op	1.69
Red River Valley Rural Electric Association	Electric Co-op	1.69
Rich Mountain Electric Cooperative	Electric Co-op	1.69
Rural Electric Cooperative Inc	Electric Co-op	1.69
Southeastern Electric Co-op Inc	Electric Co-op	1.69
Southwest Arkansas Electric Co-op	Electric Co-op	1.69
Southwest Rural Electric Cooperative	Electric Co-op	1.69
Tri-County Electric Cooperative Inc	Electric Co-op	1.69
Verdigris Valley Electric Cooperative	Electric Co-op	1.69
Western Farmers Electric Cooperative	Electric Co-op	1.69
East Central Oklahoma Gas Authority	Gas Co-op	1.69
Allete Clean Energy	Electric Power	2.82
ALLETE Clean Energy	Electric Power	2.82
Arbuckle Mountain Wind Farm LLC	Electric Power	2.82
Associated Electric Cooperative	Electric Power	2.82
Balko Wind LLC	Electric Power	2.82
Blackwell Wind LLC	Electric Power	2.82
Blattner Energy LLC	Electric Power	2.82
Blue Canyon Wind Power II LLC	Electric Power	2.82
Blue Canyon Wind Power LLC	Electric Power	2.82



Blue Canyon Wind Power V LLC	Electric Power	2.82
Blue Canyon Wind Power VI LLC	Electric Power	2.82
Boiling Springs Windfarm LLC	Electric Power	2.82
Buffalo Bear LLC	Electric Power	2.82
Canadian Hills Wind Farm LLC	Electric Power	2.82
Dempsey Ridge Wind Farm LLC	Electric Power	2.82
Dexxon Inc	Electric Power	2.82
Drift Sand Wind LLC	Electric Power	2.82
Duke Energy	Electric Power	2.82
Enel Green Power	Electric Power	2.82
Enel Green Power 25 Mile Creek LLC	Electric Power	2.82
Enel Green Power North America	Electric Power	2.82
Enel Green Power North America	Electric Power	2.82
Enel Green Power North America Inc	Electric Power	2.82
Exelon Corporation	Electric Power	2.82
FPL Energy Cowboy Wind LLC	Electric Power	2.82
Goodwell Wind Energy	Electric Power	2.82
Grand River Dam Authority	Electric Power	2.82
Great Prairie Wind LLC - Nextera Energy	Electric Power	2.82
Invenergy Services LLC	Electric Power	2.82
KAMO Power	Electric Power	2.82
Kingfisher Wind LLC	Electric Power	2.82
KPP Supply	Electric Power	2.82
Liberty Utilities - Empire District	Electric Power	2.82
Mammoth Plains Wind LLC	Electric Power	2.82
Maverick Energy Center	Electric Power	2.82
Minco II Wind LLC	Electric Power	2.82
Minco Wind III LLC	Electric Power	2.82
Minco Wind IV LLC	Electric Power	2.82
Minco Wind LLC	Electric Power	2.82
Nextera Energy	Electric Power	2.82
NextEra Energy - Ponderosa	Electric Power	2.82
Nextera Energy Breckinridge Wind LLC	Electric Power	2.82
NextEra Energy Elk City II Wind LLC	Electric Power	2.82
NextEra Energy Elk City Wind LLC	Electric Power	2.82
Oklahoma Gas & Electric Company	Electric Power	2.82
Oklahoma Wind Energy Center	Electric Power	2.82
Origin Wind Energy LLC	Electric Power	2.82
Osage Wind LLC	Electric Power	2.82
Persimmon Creek Wind Farm 1, LLC	Electric Power	2.82
Public Service Company of Oklahoma	Electric Power	2.82
Red Hills Wind Project LLC/Acciona Energy	Electric Power	2.82
Redbed Plains Wind Farm LLC	Electric Power	2.82
Rock Falls Wind Farm	Electric Power	2.82
Rush Springs Wind LLC	Electric Power	2.82
Seiling Wind LLC	Electric Power	2.82

Sleeping Bear LLC	Electric Power	2.82
Southern Power Company	Electric Power	2.82
Taloga Wind LLC	Electric Power	2.82
Thunder Ranch Wind Project LLC	Electric Power	2.82
Abundance Energy I LLC	Pipeline	0.84
Acme Energy Services dba O-K Gas Services	Pipeline	0.84
Adparo LLC	Pipeline	0.84
AEXCO Petroleum Inc	Pipeline	0.84
Allan Baugh dba Erik Operating	Pipeline	0.84
Amarillo Natural Gas Inc	Pipeline	0.84
Amerigas Propane	Pipeline	0.84
Amplify Oklahoma Operating LLC	Pipeline	0.84
Anadarko Minerals Inc	Pipeline	0.84
ANR Pipeline Company	Pipeline	0.84
Anstine and Musgrove Inc	Pipeline	0.84
Antioch Operating LLC	Pipeline	0.84
AquaNyx Midstream LLC	Pipeline	0.84
Aria Energy/Timberline Energy LLC	Pipeline	0.84
Arkansas Oklahoma Gas Corporation	Pipeline	0.84
Arkoma Operations LLC	Pipeline	0.84
Arrow Oil & Gas Inc	Pipeline	0.84
Assiduous Energy LLC	Pipeline	0.84
Atchley Resources Inc	Pipeline	0.84
Avalanche Oil and Gas LLC	Pipeline	0.84
B & G Production Inc	Pipeline	0.84
Barbour Energy Corp	Pipeline	0.84
Bays Oilfield Supply Company Inc	Pipeline	0.84
BBR Oil Corp	Pipeline	0.84
BCE -Mach III LLC	Pipeline	0.84
BCE-Mach LLC	Pipeline	0.84
Bell Gas LLC	Pipeline	0.84
Berexco LLC	Pipeline	0.84
Binger Operations LLC	Pipeline	0.84
Bison Oilfield Services LLC	Pipeline	0.84
Black Bear Transmission LLC	Pipeline	0.84
Black Mountain Sand	Pipeline	0.84
Blackbeard Operating LLC	Pipeline	0.84
Blackfire Operating LLC	Pipeline	0.84
Blake Production Company, Inc	Pipeline	0.84
Blue Bear Energy LLC	Pipeline	0.84
Blue Cedar Energy LLC	Pipeline	0.84
Blue Mountain Midstream	Pipeline	0.84
BNK Petroleum Inc	Pipeline	0.84
Bounty Transfer LLC	Pipeline	0.84
BP Pipeline (North America) Inc	Pipeline	0.84
Branch Midco Investments LLC	Pipeline	0.84

BRG Petroleum LLC	Pipeline	0.84
BTA Oil Producers LLC	Pipeline	0.84
Buffco Production Inc	Pipeline	0.84
Calebs Resources LLC	Pipeline	0.84
Calllidus Technologies LLC	Pipeline	0.84
Calyx Energy III LLC	Pipeline	0.84
Camino Natural Resources LLC	Pipeline	0.84
Canvas Energy Inc	Pipeline	0.84
Canyon Creek Energy	Pipeline	0.84
CapturePoint LLC	Pipeline	0.84
Cardinal River Operating LLC	Pipeline	0.84
Carrera Operating Company LLC	Pipeline	0.84
Cartledge & Cartledge Oil Company	Pipeline	0.84
Cascade Pipeline LLC	Pipeline	0.84
Casey Musgrove Oil Company Inc	Pipeline	0.84
Casillas Petroleum Corp	Pipeline	0.84
Castle Operating LLC	Pipeline	0.84
Ceja Corp	Pipeline	0.84
CEP Mid-Continent LLC (Exponent Energy)	Pipeline	0.84
Chaco Energy Company	Pipeline	0.84
Champlin Exploration Inc	Pipeline	0.84
Charter Oak Production Company LLC	Pipeline	0.84
Chisholm Oil and Gas Operating	Pipeline	0.84
Circle 9 Resources LLC	Pipeline	0.84
Citizen Energy III LLC	Pipeline	0.84
Clean Harbors Lone Mountain LLC	Pipeline	0.84
Coal County Gathering LLC	Pipeline	0.84
Cobra Oil & Gas Corp	Pipeline	0.84
Coffeyville Resources Crude Transportation	Pipeline	0.84
Colorado Interstate Gas Company	Pipeline	0.84
Comanche Exploration Company LLC	Pipeline	0.84
Combined Resources Corporation	Pipeline	0.84
Command Energy	Pipeline	0.84
Contango Resources, Inc	Pipeline	0.84
Continental Energy Operating LLC	Pipeline	0.84
Continental Resources Inc	Pipeline	0.84
Continuum Midstream LLC	Pipeline	0.84
Coterra Energy	Pipeline	0.84
Cottonmouth SWD LLC	Pipeline	0.84
Covia	Pipeline	0.84
CP Energy	Pipeline	0.84
CPE Gathering Midcon LLC	Pipeline	0.84
CPRP Services LLC	Pipeline	0.84
Crawley Petroleum Corp	Pipeline	0.84
Crown Energy Company	Pipeline	0.84
Crown Midstream LLC	Pipeline	0.84

Crown Pipeline Company LLC	Pipeline	0.84
Cummings Oil Company	Pipeline	0.84
D & J Oil Company Inc	Pipeline	0.84
Dash Operating LLC	Pipeline	0.84
Davidson Energy Inc	Pipeline	0.84
Davis Operating Company	Pipeline	0.84
Daylight Petroleum	Pipeline	0.84
DCP Midstream LLC	Pipeline	0.84
Deeprook Energy Resources LLC	Pipeline	0.84
Deisenroth Gas Products Inc	Pipeline	0.84
Delek Crude Logistics	Pipeline	0.84
Devon Energy Production Company LP	Pipeline	0.84
Dewey Energy GP LLC	Pipeline	0.84
Dill City Gathering LLC	Pipeline	0.84
Disposal Systems LLC	Pipeline	0.84
DonRay Petroleum LLC	Pipeline	0.84
Dorado Energy LLC	Pipeline	0.84
Dryes Corner LLC	Pipeline	0.84
Duncan Oil Properties Inc	Pipeline	0.84
E2 Operating LLC	Pipeline	0.84
Eagle Energy Exploration Production LLC	Pipeline	0.84
Eagle Road Oil LLC	Pipeline	0.84
Edinger Engineering Inc	Pipeline	0.84
El Paso Natural Gas Company	Pipeline	0.84
elcHenergy LLC	Pipeline	0.84
Elmore Oil	Pipeline	0.84
EMJO Operations Inc	Pipeline	0.84
Empire Public Schools	Pipeline	0.84
Enbridge Energy Partners, L.P	Pipeline	0.84
Enerfin Gathering LLC	Pipeline	0.84
Enerfin Gathering-East LLC	Pipeline	0.84
Enerfin Pipeline LLC	Pipeline	0.84
Energy Transfer Company	Pipeline	0.84
EnerQuest Oil & Gas LLC	Pipeline	0.84
Engie	Pipeline	0.84
Enlink Midstream	Pipeline	0.84
Enterprise Crude Pipeline LLC	Pipeline	0.84
Enterprise Operating Products LP Mid America Pl	Pipeline	0.84
Enterprise Products Operating LLC	Pipeline	0.84
EOG Resources Inc	Pipeline	0.84
Evolution Energy LLC	Pipeline	0.84
Excalibur Resources LLC	Pipeline	0.84
Explorer Pipeline Company	Pipeline	0.84
Express Oil and Gas LLC	Pipeline	0.84
FBF Energy LLC	Pipeline	0.84
Finley Resources Inc	Pipeline	0.84

First Natural Gas Inc	Pipeline	0.84
Ford Energy Corp	Pipeline	0.84
Formentera Operations LLC	Pipeline	0.84
Foundation Energy Management LLC	Pipeline	0.84
Freedom Operating Company LLC	Pipeline	0.84
Friedel Petroleum Corp Inc	Pipeline	0.84
FX Energy Operating LLC	Pipeline	0.84
Gateway Resources USA Inc	Pipeline	0.84
Getka Energy	Pipeline	0.84
Gilliland Oil and Gas Inc	Pipeline	0.84
Glenn Springs Holdings Inc	Pipeline	0.84
Golden Gas Service Company	Pipeline	0.84
Grayhorse Operating Inc	Pipeline	0.84
Great Salt Plains Pipeline LLC	Pipeline	0.84
Greenhead Energy Operating LLC	Pipeline	0.84
Greenlight Natural Gas	Pipeline	0.84
Gulf Pipeline LLC	Pipeline	0.84
Gulf South Pipeline	Pipeline	0.84
Gulfport Energy Corporation	Pipeline	0.84
Hanna Oil and Gas	Pipeline	0.84
Harrison Oil & Gas Inc	Pipeline	0.84
Hazelwood Exploration and Production Company	Pipeline	0.84
HGA LLC	Pipeline	0.84
HighMark Energy Operating LLC	Pipeline	0.84
Hiland Partners LP (Scissortail)	Pipeline	0.84
Holcim (US) Inc	Pipeline	0.84
Holly Energy Partners Operating LP	Pipeline	0.84
Horizon Gas Gathering, LLC	Pipeline	0.84
Howard Energy Partners Oklahoma Gathering LLC	Pipeline	0.84
Hoxbar Gas System LLC	Pipeline	0.84
Hughes Gas System LLC	Pipeline	0.84
Huntington Energy LLC	Pipeline	0.84
Impact Energy Operating LLC	Pipeline	0.84
Indian Oil Company Inc	Pipeline	0.84
Iochem Corp	Pipeline	0.84
Iofina Resources Inc	Pipeline	0.84
Iron Horse Midstream LLC	Pipeline	0.84
Jaco Energy Company Inc	Pipeline	0.84
Jayhawk Pipeline LLC	Pipeline	0.84
JMA Energy Company LLC	Pipeline	0.84
Jones & Buck Development LLC	Pipeline	0.84
Jumpstart Investments LLC	Pipeline	0.84
Kaiser-Francis Oil Company	Pipeline	0.84
Kansas Gas Service	Pipeline	0.84
KB Oil & Gas LLC	Pipeline	0.84
Keith F Walker Oil & Gas Company LLC	Pipeline	0.84



Kenneth W Cory Ltd	Pipeline	0.84
Kepco Operating Inc	Pipeline	0.84
Keyera Energy Inc	Pipeline	0.84
Keystone Gas Corp	Pipeline	0.84
Kimberly - Clark	Pipeline	0.84
King Energy LLC	Pipeline	0.84
Kingfisher Resources Inc	Pipeline	0.84
Kirkpatrick Oil Company Inc	Pipeline	0.84
KJR Services LLC	Pipeline	0.84
Koda Operating	Pipeline	0.84
KPC Pipeline LLC	Pipeline	0.84
Kybenco Disposals LLC	Pipeline	0.84
L E Jones Operating Inc	Pipeline	0.84
LAML Companies, LLC	Pipeline	0.84
Landmark Energy	Pipeline	0.84
Larkspur Operating LLC	Pipeline	0.84
Latigo Drilling Corporation	Pipeline	0.84
Latigo Oil & Gas Inc	Pipeline	0.84
Lazarus Gas Gathering LLC	Pipeline	0.84
Leasehold Management Corp	Pipeline	0.84
Lewis Oil Operations LLC	Pipeline	0.84
Lime Rock Resources IV Operating	Pipeline	0.84
Lincoln Ventures LLC	Pipeline	0.84
Linde Inc	Pipeline	0.84
Lobo Exploration Company	Pipeline	0.84
Longberry Energy Inc	Pipeline	0.84
Longfellow Energy, LP	Pipeline	0.84
LP Adams Consulting	Pipeline	0.84
Lu-Ray Petroleum Inc	Pipeline	0.84
M E Klein & Associates LLC	Pipeline	0.84
Mack Energy Company	Pipeline	0.84
Magellan Midstream Partners LP	Pipeline	0.84
Magnum Energy Inc/ Citation Pipeline LLC	Pipeline	0.84
Mainline Midstream LLC	Pipeline	0.84
Mallorn Energy LLC	Pipeline	0.84
Marathon Oil Company	Pipeline	0.84
Marathon Pipe Line LLC	Pipeline	0.84
Marjo Operating Company LLC	Pipeline	0.84
MarkWest Oklahoma Gas Company LLC	Pipeline	0.84
Maverick Natural Resources	Pipeline	0.84
Maverick Natural Resources LLC	Pipeline	0.84
MBM Oil and Gas	Pipeline	0.84
Meadowbrook Oil Corporation of Oklahoma	Pipeline	0.84
Meridian Brick	Pipeline	0.84
Merit Energy Company	Pipeline	0.84
Mewbourne Oil Company	Pipeline	0.84

Mid-Con Energy Operating Inc	Pipeline	0.84
MidPoint Midstream (Maverick Natural Resources)	Pipeline	0.84
Midship Pipeline Company LLC	Pipeline	0.84
Midstream Energy Services LLC (Badger Midstream)	Pipeline	0.84
MM Energy Inc	Pipeline	0.84
Monarch Oil Pipeline LLC	Pipeline	0.84
Monterey Production Company LLC	Pipeline	0.84
Morgan Mountain Pipeline Partners LLC	Pipeline	0.84
MPB Oil & Gas	Pipeline	0.84
Mustang Fuel Corporation	Pipeline	0.84
MV Pipeline Company	Pipeline	0.84
MWC Pipeline LLC	Pipeline	0.84
Natural Gas Pipeline Co of America	Pipeline	0.84
Navigator Energy Services	Pipeline	0.84
Nemaha Gas Gathering LLC	Pipeline	0.84
New Horizon Resources LLC	Pipeline	0.84
NFCDA Energy LLC	Pipeline	0.84
NGL Crude Pipeline LLC	Pipeline	0.84
Noble Resources Inc	Pipeline	0.84
NOGP Operating Company LLC	Pipeline	0.84
Northern Natural Gas Company	Pipeline	0.84
NuStar Logistics LP	Pipeline	0.84
OEX-1 LLC	Pipeline	0.84
OGP Operating Inc	Pipeline	0.84
Okie Crude Company	Pipeline	0.84
Oklahoma Gas Gathering LLC	Pipeline	0.84
Oklahoma Natural Gas Company	Pipeline	0.84
O'Neal Oil & Gas Company	Pipeline	0.84
ONEOK Field Services Company	Pipeline	0.84
ONEOK Gas Transportation LLC	Pipeline	0.84
ONEOK NGL Pipeline LP	Pipeline	0.84
Opal Operating Company LLC	Pipeline	0.84
Orca Operating Company LLC	Pipeline	0.84
Osage Hills Pipeline Company LLC	Pipeline	0.84
Otter Creek Midstream LLC	Pipeline	0.84
Ouachita Exploration Inc	Pipeline	0.84
Overflow Energy LLC	Pipeline	0.84
Ovintiv Mid-Continent Inc	Pipeline	0.84
Oxley Energy	Pipeline	0.84
PAL Energy LLC	Pipeline	0.84
Palm Oil & Gas Company	Pipeline	0.84
Palo Duro Midstream LLC	Pipeline	0.84
Paloma Operating Company Inc	Pipeline	0.84
Panhandle Eastern Pipeline Company	Pipeline	0.84
Pantera Energy Company	Pipeline	0.84
Panther City Midstream LLC	Pipeline	0.84

Parsage Oil	Pipeline	0.84
PCL Energy LLC	Pipeline	0.84
Perkins Energy Company	Pipeline	0.84
Petco Petroleum	Pipeline	0.84
Petron Energy II Pipeline Inc	Pipeline	0.84
PF Beeler LLC	Pipeline	0.84
Phillips 66 Pipeline LLC	Pipeline	0.84
Phoenix Midstream LLC	Pipeline	0.84
Piper Operating LLC	Pipeline	0.84
Plains Pipeline LP	Pipeline	0.84
PO&G Operating	Pipeline	0.84
Ponderosa Gathering LLC	Pipeline	0.84
Power Compression LLC	Pipeline	0.84
Presidio Petroleum	Pipeline	0.84
Presley Operating LLC	Pipeline	0.84
Questa Energy	Pipeline	0.84
R.L. Properties, LP	Pipeline	0.84
Ramsey Property Management LLC	Pipeline	0.84
Ranken Energy Corp	Pipeline	0.84
Raptor Midstream Partners LLC	Pipeline	0.84
Raydon Exploration Inc	Pipeline	0.84
Reach Oil and Gas Company	Pipeline	0.84
Red Hawk Resources Inc	Pipeline	0.84
Red Stick Gathering LLC	Pipeline	0.84
Regency Gas Services	Pipeline	0.84
Resource Oil and Gas LLC	Pipeline	0.84
Revolution Energy Holdings	Pipeline	0.84
Revolution Res c/o Finley & Cook/ Oil & Gas Dept	Pipeline	0.84
Rhino Operating Company LLC	Pipeline	0.84
Richland Resources Corporation	Pipeline	0.84
Rimrock Resource Operating LLC	Pipeline	0.84
Ringwood Gathering Company/XTO Energy, Inc	Pipeline	0.84
River Rock Operating LLC	Pipeline	0.84
Riverfront Exploration LLC	Pipeline	0.84
RKK Production Company	Pipeline	0.84
Roberson Oil Company Inc	Pipeline	0.84
Rougeot Oil & Gas Corp	Pipeline	0.84
Route 66 GGS LLC	Pipeline	0.84
RTC Resources LLC	Pipeline	0.84
Sabre Operating Inc	Pipeline	0.84
SaddleHorn Pipeline Operated by Magellan MS	Pipeline	0.84
Sage Natural Resources LLC	Pipeline	0.84
Sandridge Energy Inc	Pipeline	0.84
Sanguine Gas Exploration LLC	Pipeline	0.84
Scissor Tail Energy LLC	Pipeline	0.84
Scoggins Production LLC	Pipeline	0.84

Scout Energy Partners LP	Pipeline	0.84
SCT Pipeline LLC	Pipeline	0.84
Select Aqua Libre Midstream LLC	Pipeline	0.84
Sentinel Energy LLC (dba Encino Operating)	Pipeline	0.84
Sequoyah Energy Holdings LLC	Pipeline	0.84
Short Junction Operating LLC	Pipeline	0.84
Silver Creek Resources LLC	Pipeline	0.84
Singer Oil Company LLC	Pipeline	0.84
SJU Holdings LLC	Pipeline	0.84
SkyCap Energy LLC	Pipeline	0.84
Slawson Exploration	Pipeline	0.84
Sloan Petroleum Services Inc	Pipeline	0.84
SNR Central Oklahoma Operating LLC	Pipeline	0.84
SNR Northern Oklahoma Operating LLC	Pipeline	0.84
Snyder Partners	Pipeline	0.84
South D LLC	Pipeline	0.84
Southern Star Central Gas PL Inc	Pipeline	0.84
Spartan Resources LLC	Pipeline	0.84
Spindletop Oil & Gas Company	Pipeline	0.84
Spire Salt Plains Storage LLC	Pipeline	0.84
Spitfire Energy Group LLC	Pipeline	0.84
Staghorn Petroleum II LLC	Pipeline	0.84
State Pipeline Corporation	Pipeline	0.84
Stephens & Johnson Operating Company	Pipeline	0.84
Stephens Energy Group LLC	Pipeline	0.84
Stephens Production Company	Pipeline	0.84
Stone Creek Operating LLC	Pipeline	0.84
Stone Oak Operating LLC	Pipeline	0.84
Streamline Midstream Inc	Pipeline	0.84
Streamline Oil and Gas Inc	Pipeline	0.84
Summit Utilities Oklahoma Inc	Pipeline	0.84
Sundown Energy LP	Pipeline	0.84
Sunshine Gas Services LLC	Pipeline	0.84
Superior Midstream LLC	Pipeline	0.84
Sutherland Energy Company LLC	Pipeline	0.84
T Bar M Energy Resources LLC	Pipeline	0.84
T E L Oil & Gas Corp	Pipeline	0.84
Tall Oak Midstream III LLC	Pipeline	0.84
Tallgrass Energy	Pipeline	0.84
Tapstone Energy LLC (Diversified Energy Company)	Pipeline	0.84
Targa Pipeline Mid-Continent LLC	Pipeline	0.84
Targa Pipeline Mid-Continent WestOK LLC	Pipeline	0.84
Teocalli Exploration LLC	Pipeline	0.84
Territory Resources LLC	Pipeline	0.84
Terzan Energy of Oklahoma LLC	Pipeline	0.84
Texas Kansas Oklahoma Gas (TKO)	Pipeline	0.84

Texoma Crude Pipeline	Pipeline	0.84
The DeHart Company	Pipeline	0.84
The Quinton Little Company Inc	Pipeline	0.84
Thoroughbred Gathering LLC	Pipeline	0.84
Timberland Gathering & Processing	Pipeline	0.84
TNT Operating	Pipeline	0.84
Toklan Oil & Gas Corp	Pipeline	0.84
TPL Arkoma Midstream LLC	Pipeline	0.84
TransCanada Keystone Pipeline	Pipeline	0.84
Travis Peak Resources Corporation	Pipeline	0.84
Trek Resources	Pipeline	0.84
Trevor Allen	Pipeline	0.84
Triad Energy Inc	Pipeline	0.84
Trinity Operating USG LLC	Pipeline	0.84
Troy Operating	Pipeline	0.84
Twisted Oak Operating LLC	Pipeline	0.84
TY Development Corporation	Pipeline	0.84
Unit Petroleum Company	Pipeline	0.84
United Energy & Exploration LLC	Pipeline	0.84
United Production Company LLC	Pipeline	0.84
Upland Operating Inc	Pipeline	0.84
Urban Oil & Gas Group LLC	Pipeline	0.84
US Energy Development Corp	Pipeline	0.84
Utility Safety & Design	Pipeline	0.84
Valero Partners North Texas LLC	Pipeline	0.84
Valero Partners Wynnewood LLC	Pipeline	0.84
Valero Refining Company Oklahoma	Pipeline	0.84
Veenker Resources Inc	Pipeline	0.84
Ventana Exploration and Prod II LLC	Pipeline	0.84
Vernon E Faulconer Inc	Pipeline	0.84
Viridis OK LLC	Pipeline	0.84
WaterBridge Arkoma Operating LLC	Pipeline	0.84
Wellco Energy Inc	Pipeline	0.84
Wentworth Operating Company	Pipeline	0.84
West Texas Gas Inc	Pipeline	0.84
West Thomas Field Services LLC	Pipeline	0.84
Western Oil & Gas Development Corp	Pipeline	0.84
White Goat Resources LLC	Pipeline	0.84
White Operating Company	Pipeline	0.84
Williams-Access Operating Area	Pipeline	0.84
Williford Energy Company	Pipeline	0.84
Woodward Iodine Corp	Pipeline	0.84
Wynn Crosby Operating LTD	Pipeline	0.84
Wynnewood Refining Company	Pipeline	0.84
Xanadu Exploration Company	Pipeline	0.84
XTO Energy - HHP	Pipeline	0.84



XTO Energy Inc (Production)	Pipeline	0.84
XTO Energy Inc/ExxonMobil	Pipeline	0.84
Xtreme Energy Company	Pipeline	0.84
Zarvona Energy LLC	Pipeline	0.84
Zenergy Inc	Pipeline	0.84
Zephyr Operating Company LLC	Pipeline	0.84
360 Communications Inc	Telecommunications	4.86
Airosurf Communications	Telecommunications	4.86
American Electric Power	Telecommunications	4.86
AT&T Corp	Telecommunications	4.86
Atlas Telephone Company Inc	Telecommunications	4.86
AtLink Services LLC	Telecommunications	4.86
Beggs Telephone Company	Telecommunications	4.86
Bixby Telephone Company	Telecommunications	4.86
Brightspeed	Telecommunications	4.86
Broken Bow Television Cable	Telecommunications	4.86
Cable One Inc (dba Sparklight) Bartlesville	Telecommunications	4.86
Cable One Inc (dba Sparklight) Ponca City	Telecommunications	4.86
Cable One Inc Ada	Telecommunications	4.86
Cable One Inc Altus	Telecommunications	4.86
Cable One Inc Ardmore	Telecommunications	4.86
Cable One Inc Clinton	Telecommunications	4.86
Cable One Inc Duncan	Telecommunications	4.86
Cable One Inc Elk City	Telecommunications	4.86
Cable One Inc Sulphur	Telecommunications	4.86
Cable One Inc Vinita	Telecommunications	4.86
Canadian Valley Telephone Company	Telecommunications	4.86
Carnegie Telephone Company	Telecommunications	4.86
Central Oklahoma Telephone Co., LLC	Telecommunications	4.86
CenturyLink	Telecommunications	4.86
Cherokee Telephone Company	Telecommunications	4.86
Chickasaw Nation Division of Commerce	Telecommunications	4.86
Chickasaw Telephone Company	Telecommunications	4.86
Chouteau Telephone Co/ Consolidated Comms of OK	Telecommunications	4.86
Cim Tel Cable Inc	Telecommunications	4.86
Cimarron Telephone Company	Telecommunications	4.86
Clarity Telecom/Bluepeak	Telecommunications	4.86
Conterra Broadband	Telecommunications	4.86
Cox Communications Inc	Telecommunications	4.86
Cox Communications/Kansas	Telecommunications	4.86
Craw-Kan Telephone Co-op Inc	Telecommunications	4.86
Cross Telephone Company	Telecommunications	4.86
Crown Castle Fiber	Telecommunications	4.86
Dobson Technologies	Telecommunications	4.86
Dobson Telephone Company	Telecommunications	4.86
DXC Technology	Telecommunications	4.86

EIT Broadband LLC	Telecommunications	4.86
Elkhart Telephone Company Inc	Telecommunications	4.86
Encore Communications	Telecommunications	4.86
ExteNet Systems LLC	Telecommunications	4.86
Fiberlight LLC	Telecommunications	4.86
FiberLink	Telecommunications	4.86
Fidelity Communications	Telecommunications	4.86
FlashLink LLC	Telecommunications	4.86
GigaPop Internet Services LLC	Telecommunications	4.86
Grand Telephone Company Inc	Telecommunications	4.86
Hinton Telephone Company Inc	Telecommunications	4.86
iSpeed Systems LLC	Telecommunications	4.86
KanOkla Networks	Telecommunications	4.86
Light Source Communications LLC	Telecommunications	4.86
LightStream Networks	Telecommunications	4.86
MBO Video Inc	Telecommunications	4.86
McElroy Manufacturing Inc	Telecommunications	4.86
MCI Worldcom dba Verizon Business	Telecommunications	4.86
McCloud Telephone Company	Telecommunications	4.86
Medicine Park Telephone Company	Telecommunications	4.86
Missouri Network Alliance (dba Bluebird Network)	Telecommunications	4.86
Mobilitie LLC	Telecommunications	4.86
Nextlink Internet	Telecommunications	4.86
Northeast Rural Services Inc	Telecommunications	4.86
OEC Fiber	Telecommunications	4.86
Oklahoma Western Telephone Company	Telecommunications	4.86
OKlatel Communications, Inc	Telecommunications	4.86
OpticTel LLC	Telecommunications	4.86
Ozark Telephone Company Inc	Telecommunications	4.86
OzarksGo	Telecommunications	4.86
Panhandle Telephone Co-op Inc	Telecommunications	4.86
Pine Telephone Company Inc	Telecommunications	4.86
Pioneer Telephone Co-op Inc	Telecommunications	4.86
Pottawatomie Telephone Company	Telecommunications	4.86
Provalue Net	Telecommunications	4.86
Salina-Spavinaw Telephone Co Inc	Telecommunications	4.86
Santa Rosa Telephone Cooperative Inc	Telecommunications	4.86
SBC- Pacific Bell Telephone Company	Telecommunications	4.86
Seneca Telephone Company Inc	Telecommunications	4.86
SkyRider Communications Inc	Telecommunications	4.86
South Central Telephone Assoc Inc	Telecommunications	4.86
Southwest OK Telephone Co Inc	Telecommunications	4.86
Sprint Nextel	Telecommunications	4.86
Suddenlink Central Region/Altice USA	Telecommunications	4.86
Suddenlink Communications/Altice USA	Telecommunications	4.86
Tahlequah Cable Television Company Inc	Telecommunications	4.86

TDS Telecom	Telecommunications	4.86
TDS Telecom Stonewall	Telecommunications	4.86
Terral Telephone Company	Telecommunications	4.86
The Junction Internet LLC	Telecommunications	4.86
Totah Communications Inc	Telecommunications	4.86
Unite Private Networks LLC	Telecommunications	4.86
United Telephone Association Inc	Telecommunications	4.86
US Cellular	Telecommunications	4.86
Valliant Telephone Company	Telecommunications	4.86
Vero Fiber Networks LLC	Telecommunications	4.86
Vyve Broadband LLC	Telecommunications	4.86
WANRack LLC	Telecommunications	4.86
Windstream Oklahoma Inc	Telecommunications	4.86
Wyandotte Telephone Company	Telecommunications	4.86
Zayo Group LLC	Telecommunications	4.86
Achille Public Utility Authority	Municipality	0.66
Afton Public Works Authority	Municipality	0.66
Anadarko Public Works Authority	Municipality	0.66
Avant Utilities Authority	Municipality	0.66
Bennington Public Works Authority	Municipality	0.66
Bethany-Warr Acres Public Works Authority	Municipality	0.66
Big Cabin Public Works Authority	Municipality	0.66
Billings Public Works Authority	Municipality	0.66
Binger Public Works Authority	Municipality	0.66
Boise City Public Works Authority	Municipality	0.66
Bokoshe Public Works Authority	Municipality	0.66
Braggs Public Works Authority	Municipality	0.66
Broken Bow Public Works Authority	Municipality	0.66
Butler Public Works Authority	Municipality	0.66
Caddo Public Works Authority	Municipality	0.66
Calera Public Works Authority	Municipality	0.66
Cameron Public Works Authority	Municipality	0.66
Carney Public Utility Authority	Municipality	0.66
Chelsea Economic Development Authority	Municipality	0.66
Chouteau Public Works Authority	Municipality	0.66
City of Ada	Municipality	0.66
City of Altus	Municipality	0.66
City of Alva	Municipality	0.66
City of Antlers	Municipality	0.66
City of Ardmore	Municipality	0.66
City of Arkoma	Municipality	0.66
City of Arnett	Municipality	0.66
City of Atoka	Municipality	0.66
City of Barnsdall	Municipality	0.66
City of Bartlesville	Municipality	0.66
City of Bethany	Municipality	0.66

City of Bixby	Municipality	0.66
City of Blackwell	Municipality	0.66
City of Blanchard	Municipality	0.66
City of Bristow	Municipality	0.66
City of Broken Arrow	Municipality	0.66
City of Cache	Municipality	0.66
City of Catoosa	Municipality	0.66
City of Chandler	Municipality	0.66
City of Checotah	Municipality	0.66
City of Cherokee	Municipality	0.66
City of Chickasha	Municipality	0.66
City of Choctaw	Municipality	0.66
City of Claremore	Municipality	0.66
City of Cleveland	Municipality	0.66
City of Clinton	Municipality	0.66
City of Coalgate	Municipality	0.66
City of Collinsville	Municipality	0.66
City of Commerce	Municipality	0.66
City of Cordell	Municipality	0.66
City of Coweta	Municipality	0.66
City of Crescent	Municipality	0.66
City of Cushing	Municipality	0.66
City of Davis	Municipality	0.66
City of Del City	Municipality	0.66
City of Dewey	Municipality	0.66
City of Drumright	Municipality	0.66
City of Duncan	Municipality	0.66
City of Durant	Municipality	0.66
City of Edmond	Municipality	0.66
City of El Reno	Municipality	0.66
City of Eldorado	Municipality	0.66
City of Elgin	Municipality	0.66
City of Elk City	Municipality	0.66
City of Elmore City	Municipality	0.66
City of Enid	Municipality	0.66
City of Erick	Municipality	0.66
City of Eufaula	Municipality	0.66
City of Fairview	Municipality	0.66
City of Frederick	Municipality	0.66
City of Garber	Municipality	0.66
City of Gentry	Municipality	0.66
City of Glenpool	Municipality	0.66
City of Gore	Municipality	0.66
City of Guthrie	Municipality	0.66
City of Guymon	Municipality	0.66
City of Hartshorne	Municipality	0.66

City of Healdton	Municipality	0.66
City of Henryetta	Municipality	0.66
City of Hobart	Municipality	0.66
City of Holdenville	Municipality	0.66
City of Hominy	Municipality	0.66
City of Hooker	Municipality	0.66
City of Hugo	Municipality	0.66
City of Hulbert	Municipality	0.66
City of Jenks	Municipality	0.66
City of Kingfisher	Municipality	0.66
City of Konawa	Municipality	0.66
City of Krebs	Municipality	0.66
City of Lawton	Municipality	0.66
City of Lexington	Municipality	0.66
City of Lindsay	Municipality	0.66
City of Madill	Municipality	0.66
City of Mangum	Municipality	0.66
City of Marlow	Municipality	0.66
City of Maud	Municipality	0.66
City of McAlester	Municipality	0.66
City of McCloud	Municipality	0.66
City of Medford	Municipality	0.66
City of Miami	Municipality	0.66
City of Midwest City	Municipality	0.66
City of Minco	Municipality	0.66
City of Moore	Municipality	0.66
City of Morris	Municipality	0.66
City of Muskogee	Municipality	0.66
City of Mustang	Municipality	0.66
City of Newcastle	Municipality	0.66
City of Newkirk	Municipality	0.66
City of Nichols Hills	Municipality	0.66
City of Nicoma Park	Municipality	0.66
City of Noble	Municipality	0.66
City of Norman	Municipality	0.66
City of Nowata	Municipality	0.66
City of Oklahoma City Fiber	Municipality	0.66
City of Oklahoma City Public Works	Municipality	0.66
City of Okmulgee	Municipality	0.66
City of Owasso	Municipality	0.66
City of Pauls Valley	Municipality	0.66
City of Pawhuska	Municipality	0.66
City of Pawnee	Municipality	0.66
City of Perkins	Municipality	0.66
City of Perry	Municipality	0.66
City of Pocola	Municipality	0.66



City of Pond Creek	Municipality	0.66
City of Poteau	Municipality	0.66
City of Prague	Municipality	0.66
City of Purcell	Municipality	0.66
City of Sallisaw	Municipality	0.66
City of Sand Springs	Municipality	0.66
City of Sapulpa	Municipality	0.66
City of Sayre	Municipality	0.66
City of Seminole	Municipality	0.66
City of Shawnee	Municipality	0.66
City of Shidler	Municipality	0.66
City of Siloam Springs	Municipality	0.66
City of Skiatook	Municipality	0.66
City of Spencer	Municipality	0.66
City of Stigler	Municipality	0.66
City of Stillwater	Municipality	0.66
City of Stroud	Municipality	0.66
City of Tecumseh	Municipality	0.66
City of The Village	Municipality	0.66
City of Tishomingo	Municipality	0.66
City of Tonkawa	Municipality	0.66
City of Tulsa	Municipality	0.66
City of Tupelo	Municipality	0.66
City of Tuttle	Municipality	0.66
City of Vinita	Municipality	0.66
City of Walters	Municipality	0.66
City of Warr Acres	Municipality	0.66
City of Watonga/Light & Water System	Municipality	0.66
City of Waynoka	Municipality	0.66
City of Weatherford	Municipality	0.66
City of Weleetka	Municipality	0.66
City of Wetumka	Municipality	0.66
City of Wewoka	Municipality	0.66
City of Wilson	Municipality	0.66
City of Woodward	Municipality	0.66
City of Wynnewood	Municipality	0.66
City of Yale	Municipality	0.66
City of Yukon	Municipality	0.66
Colbert Public Utility Authority	Municipality	0.66
Colcord Public Works Authority	Municipality	0.66
Comanche Public Works Authority	Municipality	0.66
Custer City Public Works Authority	Municipality	0.66
Dacoma Public Works Authority	Municipality	0.66
Davenport Utility Authority	Municipality	0.66
Dewar Public Works	Municipality	0.66
Duke Municipal Authority	Municipality	0.66

Dustin Public Works Authority	Municipality	0.66
East Central Oklahoma Water Authority	Municipality	0.66
Fort Gibson Utility Authority	Municipality	0.66
Freedom Municipal Trust Authority	Municipality	0.66
Geary Utility Authority	Municipality	0.66
Glencoe Public Works Authority	Municipality	0.66
Goldsby Water Authority	Municipality	0.66
Goltry Public Works Authority	Municipality	0.66
Greenfield Utility Company	Municipality	0.66
Grove Municipal Services Authority	Municipality	0.66
Hanna Public Works Authority	Municipality	0.66
Harrah Public Works Authority	Municipality	0.66
Haskell Public Works Authority	Municipality	0.66
Heavener Utilities Authority	Municipality	0.66
Hitchcock Public Works Authority	Municipality	0.66
Hollis Public Works Authority/City of Hollis	Municipality	0.66
Idabel Public Works Authority/City of Idabel	Municipality	0.66
Jay Utility Authority	Municipality	0.66
Jennings Public Water Authority	Municipality	0.66
Kansas Public Works	Municipality	0.66
Kaw Municipal Authority Trust	Municipality	0.66
Kendrick Municipal Authority	Municipality	0.66
Kenefic Public Utility Authority	Municipality	0.66
Ketchum Public Works Authority	Municipality	0.66
Keyes Utility Authority	Municipality	0.66
Kinta Public Works Authority	Municipality	0.66
Lahoma Public Works Authority	Municipality	0.66
Langley Public Works Authority	Municipality	0.66
Locust Grove Public Works	Municipality	0.66
Lone Grove W & S Trust Authority	Municipality	0.66
Lone Wolf Public Works Association	Municipality	0.66
Mannford Public Works Authority	Municipality	0.66
Mannsville Public Works Authority	Municipality	0.66
Marietta Public Works Authority	Municipality	0.66
McCurtain Municipal Authority	Municipality	0.66
Morrison Public Works Authority	Municipality	0.66
Mountain View Town of	Municipality	0.66
Mulhall Town of	Municipality	0.66
Municipal Utility Board/City of Pryor	Municipality	0.66
New Prue Public Works Authority	Municipality	0.66
Norge Water & Sewer Company Inc	Municipality	0.66
Northeast OK Public Facilities Authority Tahlequah	Municipality	0.66
Ochelata Utility Authority	Municipality	0.66
Oilton Public Works Authority	Municipality	0.66
Okemah Utility Authority	Municipality	0.66
Oklahoma City Water & Waste Water Utilities	Municipality	0.66

Osage Public Works	Municipality	0.66
Piedmont Municipality Authority	Municipality	0.66
Pittsburg County Public Works Authority	Municipality	0.66
Ponca City Utility Authority	Municipality	0.66
Porter Public Works Authority	Municipality	0.66
PSCI (Fort Sill DPW)	Municipality	0.66
Quinton Public Works	Municipality	0.66
Rattan Public Works Authority	Municipality	0.66
Ripley Public Works Authority	Municipality	0.66
River Parks Authority	Municipality	0.66
Roff Public Works Authority	Municipality	0.66
Salina Public Works Authority	Municipality	0.66
Slick Public Works Authority	Municipality	0.66
Sperry Utility Services Authority	Municipality	0.66
Stilwell Utility	Municipality	0.66
Stonewall PWA	Municipality	0.66
Sulphur Municipal Authority	Municipality	0.66
Tahlequah Public Works Authority	Municipality	0.66
Talihina Public Works	Municipality	0.66
Temple Utility Authority	Municipality	0.66
Thomas Public Works Authority	Municipality	0.66
Town of Adair	Municipality	0.66
Town of Allen	Municipality	0.66
Town of Ames	Municipality	0.66
Town of Arapaho	Municipality	0.66
Town of Arcadia	Municipality	0.66
Town of Asher	Municipality	0.66
Town of Beaver	Municipality	0.66
Town of Blair	Municipality	0.66
Town of Bokchito	Municipality	0.66
Town of Boswell	Municipality	0.66
Town of Braman	Municipality	0.66
Town of Bridgeport	Municipality	0.66
Town of Buffalo	Municipality	0.66
Town of Burbank	Municipality	0.66
Town of Burlington	Municipality	0.66
Town of Burns Flat	Municipality	0.66
Town of Byars	Municipality	0.66
Town of Calumet	Municipality	0.66
Town of Canton	Municipality	0.66
Town of Canute	Municipality	0.66
Town of Carmen	Municipality	0.66
Town of Carnegie	Municipality	0.66
Town of Carter	Municipality	0.66
Town of Cashion	Municipality	0.66
Town of Chattanooga	Municipality	0.66

Town of Cheyenne	Municipality	0.66
Town of Cleo Springs	Municipality	0.66
Town of Copan	Municipality	0.66
Town of Corn	Municipality	0.66
Town of Covington	Municipality	0.66
Town of Cyril	Municipality	0.66
Town of Delaware Public Works Authority	Municipality	0.66
Town of Depew	Municipality	0.66
Town of Dibble	Municipality	0.66
Town of Dover	Municipality	0.66
Town of Earlsboro	Municipality	0.66
Town of Fairfax	Municipality	0.66
Town of Fairland	Municipality	0.66
Town of Fairmont	Municipality	0.66
Town of Fargo	Municipality	0.66
Town of Forgan	Municipality	0.66
Town of Fort Supply	Municipality	0.66
Town of Foss	Municipality	0.66
Town of Francis	Municipality	0.66
Town of Gage	Municipality	0.66
Town of Gans	Municipality	0.66
Town of Gate	Municipality	0.66
Town of Goodwell	Municipality	0.66
Town of Gotebo	Municipality	0.66
Town of Granite	Municipality	0.66
Town of Hammon	Municipality	0.66
Town of Hardesty	Municipality	0.66
Town of Haworth	Municipality	0.66
Town of Hennessey	Municipality	0.66
Town of Hinton	Municipality	0.66
Town of Inola	Municipality	0.66
Town of Jet	Municipality	0.66
Town of Jones	Municipality	0.66
Town of Kellyville	Municipality	0.66
Town of Keota	Municipality	0.66
Town of Kiefer	Municipality	0.66
Town of Kingston	Municipality	0.66
Town of Kremlin	Municipality	0.66
Town of Lamont	Municipality	0.66
Town of Laverne	Municipality	0.66
Town of Leedey	Municipality	0.66
Town of Loco	Municipality	0.66
Town of Luther	Municipality	0.66
Town of Marland	Municipality	0.66
Town of Maysville	Municipality	0.66
Town of Medicine Park	Municipality	0.66

Town of Meeker	Municipality	0.66
Town of Meno	Municipality	0.66
Town of Mooreland	Municipality	0.66
Town of Mounds	Municipality	0.66
Town of Muldrow	Municipality	0.66
Town of Ninnekah	Municipality	0.66
Town of North Enid	Municipality	0.66
Town of Okarche	Municipality	0.66
Town of Okay	Municipality	0.66
Town of Okeene	Municipality	0.66
Town of Olustee	Municipality	0.66
Town of Oologah	Municipality	0.66
Town of Orlando	Municipality	0.66
Town of Panama	Municipality	0.66
Town of Quapaw	Municipality	0.66
Town of Ramona	Municipality	0.66
Town of Ratliff City	Municipality	0.66
Town of Red Bird	Municipality	0.66
Town of Red Rock	Municipality	0.66
Town of Ringling	Municipality	0.66
Town of Ringwood	Municipality	0.66
Town of Rocky	Municipality	0.66
Town of Roland	Municipality	0.66
Town of Ryan	Municipality	0.66
Town of Seiling	Municipality	0.66
Town of Sentinel	Municipality	0.66
Town of Shady Point	Municipality	0.66
Town of Shattuck	Municipality	0.66
Town of South Coffeyville	Municipality	0.66
Town of Spiro	Municipality	0.66
Town of Sterling	Municipality	0.66
Town of Stratford	Municipality	0.66
Town of Taft	Municipality	0.66
Town of Taloga	Municipality	0.66
Town of Tyrone	Municipality	0.66
Town of Valley Brook	Municipality	0.66
Town of Valliant Public Works Authority	Municipality	0.66
Town of Verden	Municipality	0.66
Town of Waukomis	Municipality	0.66
Town of Welch	Municipality	0.66
Town of Wellston	Municipality	0.66
Town of West Siloam Springs	Municipality	0.66
Town of Whitefield	Municipality	0.66
Town of Willow	Municipality	0.66
Town of Wister	Municipality	0.66
Town of Wynona	Municipality	0.66



Union City Municipal Authority	Municipality	0.66
Vici Public Works Authority	Municipality	0.66
Wagoner Public Works Authority	Municipality	0.66
Wakita Utility Authority	Municipality	0.66
Wanette Public Works Authority	Municipality	0.66
Wann Public Works Authority	Municipality	0.66
Warner Utility Authority	Municipality	0.66
Watts Public Works Authority	Municipality	0.66
Waurika Public Works Authority	Municipality	0.66
Wayne Public Works Authority	Municipality	0.66
Westville Utility Authority	Municipality	0.66
Wilburton Public Works Authority	Municipality	0.66
Wright City Public Works Authority	Municipality	0.66
Oklahoma Conservation Commission	Public Agency	0.66
ONENET	Public Agency	0.66
State of Oklahoma	Public Agency	0.66
13th Street Properties LLC	Master Meter	0.13
2620 N Meridian (Brick&Vine) -Vines at Eleanor Apts	Master Meter	0.13
AE French Villa LLC	Master Meter	0.13
Ardmore Village of Omnia Inc	Master Meter	0.13
Ashbriar HOA	Master Meter	0.13
B&L Grace Properties LLC	Master Meter	0.13
Benefield Capital Management	Master Meter	0.13
Bethany Park Apartments	Master Meter	0.13
Bristow Village	Master Meter	0.13
Central Park Owners Association	Master Meter	0.13
Chalet Apartments/Pro Residential	Master Meter	0.13
Connors State College	Master Meter	0.13
Crosshaven Properties Inc	Master Meter	0.13
CStar Management LLC	Master Meter	0.13
Deerfield Estates	Master Meter	0.13
Denver Realty Group	Master Meter	0.13
Eagle Heights Family Housing Corp.	Master Meter	0.13
East Central University	Master Meter	0.13
Eastern Oklahoma State College	Master Meter	0.13
Garland Square Apts	Master Meter	0.13
Goldwynn Heatherwood Apartments, LLC	Master Meter	0.13
Grand Prairie Apartments LLC/Green Co Dev Grp Inc	Master Meter	0.13
Heatherstone Apartments/HSOPCO LLC	Master Meter	0.13
Henneberry Properties	Master Meter	0.13
High Road LLC dba Silver Springs MHP	Master Meter	0.13
Hughes Management	Master Meter	0.13
Independent Management Services	Master Meter	0.13
Keetoowah Village Apartments	Master Meter	0.13
Langston University	Master Meter	0.13
Living Investments	Master Meter	0.13

LynCo Inc	Master Meter	0.13
Michaels Organization	Master Meter	0.13
Millenia/Plaza Hills 2192 OK LLC	Master Meter	0.13
MYA Properties LLC	Master Meter	0.13
New Lake Apartments LLC	Master Meter	0.13
Nine East Apartments	Master Meter	0.13
Oklahoma Baptist University	Master Meter	0.13
Oklahoma Christian University	Master Meter	0.13
Oklahoma City Airport Trust	Master Meter	0.13
Oklahoma City Housing Authority	Master Meter	0.13
Oklahoma City University	Master Meter	0.13
Oklahoma Panhandle State University	Master Meter	0.13
Oklahoma State University	Master Meter	0.13
Paradise Corners Apartments	Master Meter	0.13
Park Villa Townhomes/Winfield Property Mngmt	Master Meter	0.13
Parkwood Gardens Ohana LLC	Master Meter	0.13
Picerne Military Housing	Master Meter	0.13
Pine Valley Apartments	Master Meter	0.13
Railfence Apartments	Master Meter	0.13
Reed's Landing Apartments	Master Meter	0.13
Rily Ltd	Master Meter	0.13
Savanna Landing	Master Meter	0.13
Spring Creek of Edmond	Master Meter	0.13
Stonetown Pine Creek LLC	Master Meter	0.13
Summit at Rockwell Apartments	Master Meter	0.13
Summit Coweta Apartments LP	Master Meter	0.13
TC Yukon Heights LLC	Master Meter	0.13
Terry Hill Apartments	Master Meter	0.13
The Fairway Apartments /Asset Living	Master Meter	0.13
Tishomingo Apartment Inc	Master Meter	0.13
TMC Property Management	Master Meter	0.13
Tulsa Housing Authority	Master Meter	0.13
University of Central Oklahoma	Master Meter	0.13
University of Oklahoma	Master Meter	0.13
University of Tulsa	Master Meter	0.13
University Village Apartments	Master Meter	0.13
Valued Partners Investments LLC	Master Meter	0.13
Vance Family Housing	Master Meter	0.13
Velma Alma Public Schools	Master Meter	0.13
Vesta Realty The Ridge Apartments	Master Meter	0.13
Western Pines Apartments	Master Meter	0.13
Windsor Village Apartments	Master Meter	0.13
72 ABW/SCOI, Communications Directorate	Other	0.13
81 Ranch	Other	0.13
Arvest Bank Operations	Other	0.13
Baptist Medical Cntr of OK-Integris/Engineering Srvc	Other	0.13

Blackwell Zinc Company	Other	0.13
Bureau of Land Management	Other	0.13
Cargill	Other	0.13
CF Industries (Terra International)	Other	0.13
Cherokee Nation	Other	0.13
Choctaw Nation of Oklahoma	Other	0.13
CP Kelco USA Inc	Other	0.13
Duncan Regional Hospital	Other	0.13
First Bank & Trust Company	Other	0.13
Fort Cobb Reservoir Master Conservancy District	Other	0.13
George Kaiser Family Foundation	Other	0.13
Georgia-Pacific Consumer Products LP	Other	0.13
High Point Park	Other	0.13
Hitch Enterprises	Other	0.13
Inframark	Other	0.13
Integris Bass Baptist Health Center	Other	0.13
International Paper	Other	0.13
Koch Fertilizer Enid LLC - Warehouse	Other	0.13
Leisure Land Water Department	Other	0.13
MidAmerica Industrial Park	Other	0.13
MidFirst Bank	Other	0.13
Misty Morris	Other	0.13
Nick Neville	Other	0.13
Oaks Country Club	Other	0.13
Oklahoma Space Industry Development Authority	Other	0.13
Oklahoma Turnpike Authority	Other	0.13
Osage Innovative Solutions LLC	Other	0.13
OU Health Science Center	Other	0.13
Patricia Island Country Club LLC	Other	0.13
Red Moon Farms	Other	0.13
Richard Radcliff	Other	0.13
Sam's Real Estate Business Trust - OK #5525	Other	0.13
Security National Bank	Other	0.13
Spring Valley Homeowners Association Inc	Other	0.13
T D Williamson Inc	Other	0.13
Tenkiller Waterworks Inc	Other	0.13
Tera Miranda Shores HOA	Other	0.13
TierPoint	Other	0.13
Tulsa Public Schools	Other	0.13
Vicinity Energy Oklahoma City Inc / OU 42710	Other	0.13
Vicinity Energy Tulsa	Other	0.13
Vinita Public Schools	Other	0.13
Wewoka Public Schools	Other	0.13
Winter Creek Golf Club	Other	0.13
Chelsea Gas Authority	Rural Gas District	0.22
Fort Cobb Oklahoma Irrigation Fuel Authority	Rural Gas District	0.22

Keystone Rural Gas Distict #1	Rural Gas District	0.22
Minco Gas Authority	Rural Gas District	0.22
NE OK Public Facilities Authority Stilwell Gas Sys	Rural Gas District	0.22
Wagoner Rural Gas Authority	Rural Gas District	0.22
Rural Sewer District #1 Rogers County	Rural Sewer District	0.22
Taneha Utility Authority	Rural Sewer District	0.22
4T Investors LLC	Rural Water District	0.22
51 East Water Inc	Rural Water District	0.22
Adair County Rural Water District #2	Rural Water District	0.22
Adair County Rural Water District #3	Rural Water District	0.22
Adair County Rural Water District #4	Rural Water District	0.22
Adamson Rural Water District #8	Rural Water District	0.22
Alfalfa County Rural Water District #1	Rural Water District	0.22
American Water Services	Rural Water District	0.22
Arbuckle Master Conservancy District	Rural Water District	0.22
Atoka County Rural Water Distict #2	Rural Water District	0.22
Atoka County Rural Water District #4	Rural Water District	0.22
Bar-Dew Water Association Inc	Rural Water District	0.22
Beckham County Rural Water District #1	Rural Water District	0.22
Beckham County Rural Water District #2	Rural Water District	0.22
Beckham County Rural Water District #3	Rural Water District	0.22
Blue Quail Water Company	Rural Water District	0.22
Bowlegs-Lima Water District Inc	Rural Water District	0.22
Bryan County Rural Water District #2	Rural Water District	0.22
Bryan County Rural Water District #5	Rural Water District	0.22
Bryan County Rural Water District #6	Rural Water District	0.22
Bryan County Rural Water District #7	Rural Water District	0.22
Buckhorn Rural Water District #2 Murray Co	Rural Water District	0.22
Canadian County Rural Water District #1	Rural Water District	0.22
Canadian County Rural Water District #4	Rural Water District	0.22
Canadian County Water Authority	Rural Water District	0.22
Central Oklahoma Master Conservancy District	Rural Water District	0.22
Cherokee County Rural Water District #1	Rural Water District	0.22
Cherokee County Rural Water District #11	Rural Water District	0.22
Cherokee County Rural Water District #13	Rural Water District	0.22
Cherokee County Rural Water District #16	Rural Water District	0.22
Cherokee County Rural Water District #2	Rural Water District	0.22
Cherokee County Rural Water District #7	Rural Water District	0.22
Cherokee County Rural Water District #8	Rural Water District	0.22
Cherokee County Rural Water District #9	Rural Water District	0.22
Cherry Tree Rural Water District	Rural Water District	0.22
Choctaw County Rural Water District #2	Rural Water District	0.22
Choctaw County Rural Water District #3	Rural Water District	0.22
Clarita-Olney Water Company Inc	Rural Water District	0.22
Cleveland County Rural Water District #1	Rural Water District	0.22
Coal County Rural Water District #5	Rural Water District	0.22

Comanche County Rural Water District #1	Rural Water District	0.22
Comanche County Rural Water District #2	Rural Water District	0.22
Comanche County Rural Water District #3	Rural Water District	0.22
Comanche County Rural Water District #4	Rural Water District	0.22
Consolidated Rural Water District #1	Rural Water District	0.22
Cotton County Rural Water District #2	Rural Water District	0.22
Craig County Rural Water District #2	Rural Water District	0.22
Craig County Rural Water District #3	Rural Water District	0.22
Creek Co Consolidated Rural Water District #3	Rural Water District	0.22
Creek County Rural Water District #1	Rural Water District	0.22
Creek County Rural Water District #2	Rural Water District	0.22
Creek County Rural Water District #4	Rural Water District	0.22
Creek County Rural Water District #5	Rural Water District	0.22
Creek County Rural Water District #7	Rural Water District	0.22
Custer County Rural Water District #3	Rural Water District	0.22
Deer Creek Water Corp	Rural Water District	0.22
Delaware County Rural Water District #1	Rural Water District	0.22
Delaware County Rural Water District #11	Rural Water District	0.22
Delaware County Rural Water District #12	Rural Water District	0.22
Delaware County Rural Water District #3	Rural Water District	0.22
Delaware County Rural Water District #7	Rural Water District	0.22
Delaware County RWSG & SW Mgmt District #10	Rural Water District	0.22
Dewey County Rural Water District #3	Rural Water District	0.22
Elm Bend Water Distr Inc	Rural Water District	0.22
Elmore City Rural Water Corporation	Rural Water District	0.22
Evergreen #18/Green Country Utility	Rural Water District	0.22
Foss Reservoir Master Conservancy District	Rural Water District	0.22
Fred Gift	Rural Water District	0.22
Frontier Development Authority	Rural Water District	0.22
Garfield County Rural Water District #4	Rural Water District	0.22
Garfield County Rural Water District #5	Rural Water District	0.22
Garfield County Rural Water District #6	Rural Water District	0.22
Garfield County Rural Water District #7	Rural Water District	0.22
Garvin County Rural Water District #1	Rural Water District	0.22
Garvin County Rural Water District #2	Rural Water District	0.22
Garvin County Rural Water District #4	Rural Water District	0.22
Garvin County Rural Water District #6	Rural Water District	0.22
Grady County Rural Water & Gas District #1	Rural Water District	0.22
Grady County Rural Water District #2	Rural Water District	0.22
Grady County Rural Water District #6	Rural Water District	0.22
Grady County Rural Water District #7	Rural Water District	0.22
Grand Lake Public Works Authority	Rural Water District	0.22
Grant County Rural Water District #1	Rural Water District	0.22
Grant Rural Water & Sewer District #1	Rural Water District	0.22
Harmon Water Corporation	Rural Water District	0.22
Harper County Rural Water District #1	Rural Water District	0.22

Haskell County Water Company	Rural Water District	0.22
Heaston Rural Water District	Rural Water District	0.22
Hendrix-Kemp Water District #9	Rural Water District	0.22
Homeowners Water Corp	Rural Water District	0.22
Hughes County Rural Water District #1	Rural Water District	0.22
Hughes County Rural Water District #2	Rural Water District	0.22
Hughes County Rural Water District #3	Rural Water District	0.22
Hughes County Rural Water District #4	Rural Water District	0.22
Hughes County Rural Water District #5	Rural Water District	0.22
Hughes County Rural Water District #6	Rural Water District	0.22
Indianola Rural Water District #18	Rural Water District	0.22
Ironside Water District Inc	Rural Water District	0.22
Jackson County Water Corp	Rural Water District	0.22
Jefferson County Rural Water District #1	Rural Water District	0.22
Johnston County Rural Water District #3	Rural Water District	0.22
Kay Co RWD #7	Rural Water District	0.22
Kay County Rural Water District #1	Rural Water District	0.22
Kay County Rural Water District #2	Rural Water District	0.22
Kay County Rural Water District #3	Rural Water District	0.22
Kay County Rural Water District #5	Rural Water District	0.22
Kiamichi Rural Water District #6	Rural Water District	0.22
Kingfisher County Rural Water District #3	Rural Water District	0.22
Kremlin-Hillsdale Rural Water District #1	Rural Water District	0.22
Lakeview Water System Inc	Rural Water District	0.22
Latimer County Rural Water District #1	Rural Water District	0.22
Latimer County Rural Water District #2	Rural Water District	0.22
Latimer County Rural Water District #3	Rural Water District	0.22
Lee Creek Rural Water District/FD	Rural Water District	0.22
Leflore County Consolidated Rural Water District #12	Rural Water District	0.22
LeFlore County Rural Water District #1	Rural Water District	0.22
LeFlore County Rural Water District #14	Rural Water District	0.22
LeFlore County Rural Water District #15	Rural Water District	0.22
LeFlore County Rural Water District #17	Rural Water District	0.22
LeFlore County Rural Water District #2	Rural Water District	0.22
LeFlore County Rural Water District #5	Rural Water District	0.22
LeFloreCounty Rural Water District #3	Rural Water District	0.22
Lincoln County District 2	Rural Water District	0.22
Lincoln County Rural Water & Sewer District #4	Rural Water District	0.22
Lincoln County Rural Water District #3	Rural Water District	0.22
Lincoln Rural Water District #1	Rural Water District	0.22
Logan County Rural Water District #1	Rural Water District	0.22
Logan County Rural Water District #2	Rural Water District	0.22
Logan County Rural Water District #3	Rural Water District	0.22
Lone Chimmey Water Association	Rural Water District	0.22
Longtown Rural Water & Sewer District #1	Rural Water District	0.22
Major County Rural Water District #1	Rural Water District	0.22

Marshall County Water Corp	Rural Water District	0.22
Mayes County Rural Water District #2	Rural Water District	0.22
Mayes County Rural Water District #3	Rural Water District	0.22
Mayes County Rural Water District #4	Rural Water District	0.22
Mayes County Rural Water District #5	Rural Water District	0.22
Mayes County Rural Water District #6	Rural Water District	0.22
Mayes County Rural Water District #8	Rural Water District	0.22
Mayes County Rural Water District #9	Rural Water District	0.22
McClain County Rural Water District #8	Rural Water District	0.22
McCord Rural Water District #3	Rural Water District	0.22
McCurtain County Rural Water District #1	Rural Water District	0.22
McCurtain County Rural Water District #2	Rural Water District	0.22
McCurtain County Rural Water District #5	Rural Water District	0.22
McCurtain County Rural Water District #7	Rural Water District	0.22
McCurtain County Rural Water District #8	Rural Water District	0.22
McCurtain County Rural Water District #9	Rural Water District	0.22
McIntosh County Rural Water District #13	Rural Water District	0.22
McIntosh County Rural Water District #5	Rural Water District	0.22
McIntosh County Rural Water District #7	Rural Water District	0.22
McIntosh County Rural Water District #9	Rural Water District	0.22
McIntosh County RWS & SWM District #2-Onapa RWD #2	Rural Water District	0.22
Mountain Park Master Conservancy District	Rural Water District	0.22
Murray County Rural Water District #1	Rural Water District	0.22
Muskogee County Rural Water District #1	Rural Water District	0.22
Muskogee County Rural Water District #2	Rural Water District	0.22
Muskogee County Rural Water District #3	Rural Water District	0.22
Muskogee County Rural Water District #4	Rural Water District	0.22
Muskogee County Rural Water District #5	Rural Water District	0.22
Muskogee County Rural Water District #6	Rural Water District	0.22
Muskogee County Rural Water District #7	Rural Water District	0.22
Noble County Rural Water District #2	Rural Water District	0.22
Noble County Rural Water District #3	Rural Water District	0.22
Noble County Rural Water District #4	Rural Water District	0.22
North Blaine Water Corporation	Rural Water District	0.22
North Fork Cabin Water Inc	Rural Water District	0.22
Nowata County Rural Water District #2	Rural Water District	0.22
Nowata County Rural Water District #6	Rural Water District	0.22
Nowata County Rural Water District #7	Rural Water District	0.22
Nowata Rural Water & Sewer District #1	Rural Water District	0.22
Okarche Rural Water District Inc	Rural Water District	0.22
Okfuskee County Rural Water District #1	Rural Water District	0.22
Okfuskee County Rural Water District #2	Rural Water District	0.22
Okfuskee County Rural Water District #3	Rural Water District	0.22
Okmulgee County Rural Water District #1	Rural Water District	0.22
Okmulgee County Rural Water District #2	Rural Water District	0.22
Okmulgee County Rural Water District #20	Rural Water District	0.22



Okmulgee County Rural Water District #21	Rural Water District	0.22
Okmulgee County Rural Water District #4	Rural Water District	0.22
Okmulgee County Rural Water District #5	Rural Water District	0.22
Okmulgee County Rural Water District #6	Rural Water District	0.22
Okmulgee County Rural Water District #7	Rural Water District	0.22
Oktaha Public Works Authority	Rural Water District	0.22
Osage County Rural Water District #1	Rural Water District	0.22
Osage County Rural Water District #15	Rural Water District	0.22
Osage County Rural Water District #21	Rural Water District	0.22
Osage County Rural Water District #5	Rural Water District	0.22
Ottawa County Rural Water District #1	Rural Water District	0.22
Ottawa County Rural Water District #2	Rural Water District	0.22
Ottawa County Rural Water District #4	Rural Water District	0.22
Ottawa County Rural Water District #6	Rural Water District	0.22
Ottawa County Rural Water District #7	Rural Water District	0.22
Ottawa County Rural Water District 5	Rural Water District	0.22
Pawnee & Payne County Rural Water District #3	Rural Water District	0.22
Pawnee County Rural Water District #1	Rural Water District	0.22
Pawnee County Rural Water District #2	Rural Water District	0.22
Payne County Rural Water Corporation #3	Rural Water District	0.22
Payne County Rural Water District #3	Rural Water District	0.22
Payne County Rural Water District #4	Rural Water District	0.22
Pecan Valley Rural Water District	Rural Water District	0.22
Peggs Water Company Inc	Rural Water District	0.22
Pittsburg County Rural Water District #11	Rural Water District	0.22
Pittsburg County Rural Water District #14	Rural Water District	0.22
Pittsburg County Rural Water District #16	Rural Water District	0.22
Pittsburg County Rural Water District #5	Rural Water District	0.22
Pittsburg County Rural Water District #6	Rural Water District	0.22
Pittsburg County Rural Water District #7	Rural Water District	0.22
Pittsburg County Rural Water District #9	Rural Water District	0.22
Pontotoc County Rural Water District #7	Rural Water District	0.22
Pontotoc County Rural Water District #8	Rural Water District	0.22
Pontotoc County Rural Water District #9	Rural Water District	0.22
Poteau Valley Imprv Authority	Rural Water District	0.22
Pottawatomie County Development Authority	Rural Water District	0.22
Pottawatomie County Rural Water District #3	Rural Water District	0.22
Pushmataha County Rural Water District #2	Rural Water District	0.22
Quartz Mountain Regional Water Authority	Rural Water District	0.22
Quinlan Community Rural Water District #1	Rural Water District	0.22
Red Star Rural Water District	Rural Water District	0.22
Reed Water Corp	Rural Water District	0.22
Rogers County Rural Water District #2	Rural Water District	0.22
Rogers County Rural Water District #3	Rural Water District	0.22
Rogers County Rural Water District #4	Rural Water District	0.22
Rogers County Rural Water District #5	Rural Water District	0.22

Rogers County Rural Water District #6	Rural Water District	0.22
Rogers County Rural Water District #7	Rural Water District	0.22
Rogers County Rural Water District #8	Rural Water District	0.22
Rogers County Rural Water District #9	Rural Water District	0.22
Rural Water District #3 Cherokee County	Rural Water District	0.22
Rural Water, Sewer and Solid Waste Dist #3 Roger Mills County	Rural Water District	0.22
Rural Water, Sewer, and Solid Waste Management District #3, Osage County	Rural Water District	0.22
RW SG &SW Management District #8	Rural Water District	0.22
Sapulpa Rural Water Company	Rural Water District	0.22
Sardis Lake Water Authority	Rural Water District	0.22
Sasakwa Water District of Seminole Nation of OK Inc	Rural Water District	0.22
Seminole County Rural Water Sewer & Solid Waste Mngmnt Dist #1	Rural Water District	0.22
Seminole County Rural Water Sewer & Solid Waste Mngmnt Dispt #2	Rural Water District	0.22
Seminole County RW & SW Management District #3	Rural Water District	0.22
Sequoyah County Rural Water District #4	Rural Water District	0.22
Sequoyah County Rural Water District #7	Rural Water District	0.22
Sequoyah County Water Association	Rural Water District	0.22
Sooner Utilities Inc	Rural Water District	0.22
South Delaware County Regional Water Authority	Rural Water District	0.22
Southern Oklahoma Water Corp	Rural Water District	0.22
Spiro East Water Association	Rural Water District	0.22
St Louis Utility Company Inc	Rural Water District	0.22
Stephens County Rural Water & Sewer District #1	Rural Water District	0.22
Stephens County Rural Water District #5	Rural Water District	0.22
Stephens County RWS & SWM District #3	Rural Water District	0.22
Stick Ross Mountain Water Company	Rural Water District	0.22
Strong City Rural Water District #1	Rural Water District	0.22
Texhoma Public Works Authority	Rural Water District	0.22
Thackerville Water District #2	Rural Water District	0.22
Tillman County Rural Water District #1	Rural Water District	0.22
Tri County Rural Water District #2	Rural Water District	0.22
Vivian Rural Water District #6	Rural Water District	0.22
Wagoner County Rural Water District #1	Rural Water District	0.22
Wagoner County Rural Water District #2	Rural Water District	0.22
Wagoner County Rural Water District #4	Rural Water District	0.22
Wagoner County Rural Water District #5	Rural Water District	0.22
Wagoner County Rural Water District #6	Rural Water District	0.22
Wagoner County Rural Water District #7	Rural Water District	0.22
Wagoner County Rural Water District #9	Rural Water District	0.22
Washington County Rural Water District #1	Rural Water District	0.22
Washington County Rural Water District #2	Rural Water District	0.22
Washington County Rural Water District #3	Rural Water District	0.22
Washington County Rural Water District #5	Rural Water District	0.22
Washita County Rural Water District #2	Rural Water District	0.22
Water Improvement District #14	Rural Water District	0.22

Water Improvement District #3	Rural Water District	0.22
Waurika Lake Master Conservancy District	Rural Water District	0.22
West Davis Rural Water Corporation	Rural Water District	0.22
Western Carter County Water & Sewage Corp	Rural Water District	0.22
Woods County Rural Water District #1	Rural Water District	0.22
Woods County Rural Water District #3	Rural Water District	0.22
Woodward County Rural Water District #2	Rural Water District	0.22

## OKIE811 MEMBERSHIP FOR 2023

### ***SUSTAINING MEMBERS – 30***

<b>Member Name</b>	<b>Classification</b>
Advanced Workzone Services SUS1175	Sustaining
American Hydrovac SUS1199	Sustaining
Blood Hound Underground Utility Locating SUS1194	Sustaining
Claims Management Resources SUS1179	Sustaining
Damage Prevention Academy SUS1170	Sustaining
Energy Worldnet SUS1182	Sustaining
Green Equipment Company SUS1177	Sustaining
GridHawk LLC SUS1171	Sustaining
Heavy Equipment Colleges of America SUS1168	Sustaining
Imperium Utility Services SUS1202	Sustaining
Irth Solutions SUS1189	Sustaining
LineQuest LLC SUS1196	Sustaining
Line-Scape LLC SUS1201	Sustaining
Municipal Electric Systems of Oklahoma SUS1184	Sustaining
OAEC - Oklahoma Association of Electric Cooperatives SUS1183	Sustaining
OCC - Oklahoma Corporation Commission SUS1166	Sustaining
Oklahoma Gas Association SUS1174	Sustaining
Oklahoma Rural Water Association SUS1169	Sustaining
OMAG - Oklahoma Municipal Assurance Group SUS1195	Sustaining
OMCA - Oklahoma Municipal Contractors Association SUS1197	Sustaining
OPAL SUS1176	Sustaining
OSC - Oklahoma Safety Council SUS1193	Sustaining
Paradigm Liaison Services LLC SUS1173	Sustaining
Phoenix Loss Control Inc SUS1186	Sustaining
Pipeline Association for Public Awareness SUS1190	Sustaining
Rust-Oleum SUS1188	Sustaining
Talygen SUS1191	Sustaining
True North Mapping and Solutions LLC SUS1198	Sustaining
Universal Surveying and Mapping SUS1200	Sustaining
USIC SUS1162	Sustaining